

Pennington Flash

Bird survey recording form

Inspiring
healthy
lifestyles

Wigan
Council

FOOTPRINT
ECOLOGY
www.footprint-ecology.co.uk

greater manchester
Record
Centre

Day & Date		Use this recording form in conjunction with the map on reverse. Record where birds were seen and where they were flushed to. Please only record water birds and notable non-water bird species
Recorder		
Weather Conditions		

Species	Count	Recording area	Species	Count	Recording area
e.g. Tufted duck	180	1 → 3			

Notes:

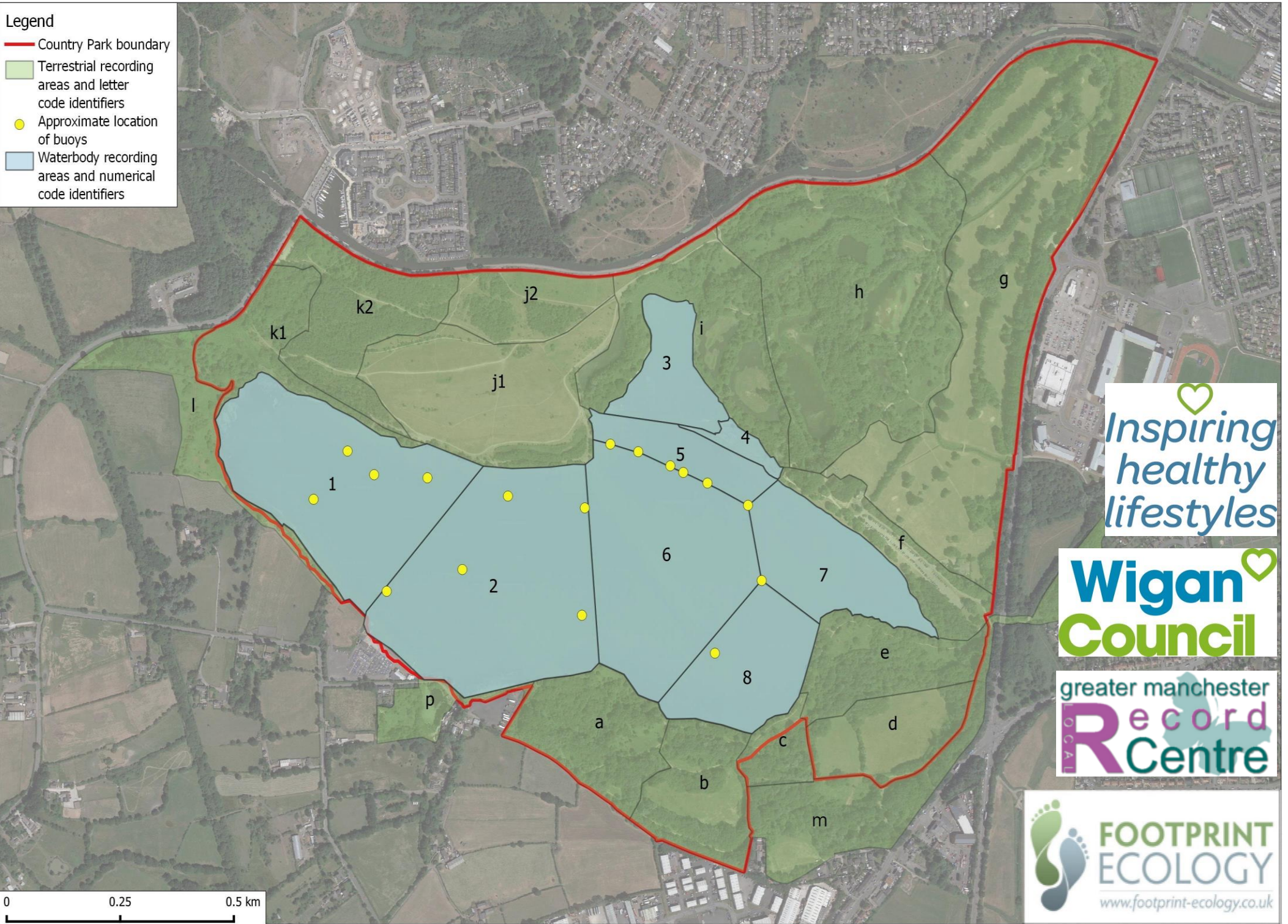


Please submit data via
https://gmwildlife.org.uk/wildlife_recording/pennington_flash_strategic_masterplan_assessment/

For questions regarding data input contact Paul Barrington at the Greater Manchester Local Record Centre
 <paul.barrington@tameside.gov.uk>

Legend

- Country Park boundary
- Terrestrial recording areas and letter code identifiers
- Approximate location of buoys
- Waterbody recording areas and numerical code identifiers



Inspiring
healthy
lifestyles

Wigan
Council

greater manchester
Record
Centre

FOOTPRINT
ECOLOGY
www.footprint-ecology.co.uk